

CERTIFICATE OF LOCATION OF GOVERNMENT CORNER

NORTH QUARTER Corner of Section 18, Township 106 N., Range 42 W., 5th P.M.

STATE OF MINNESOTA, County of MURRAY

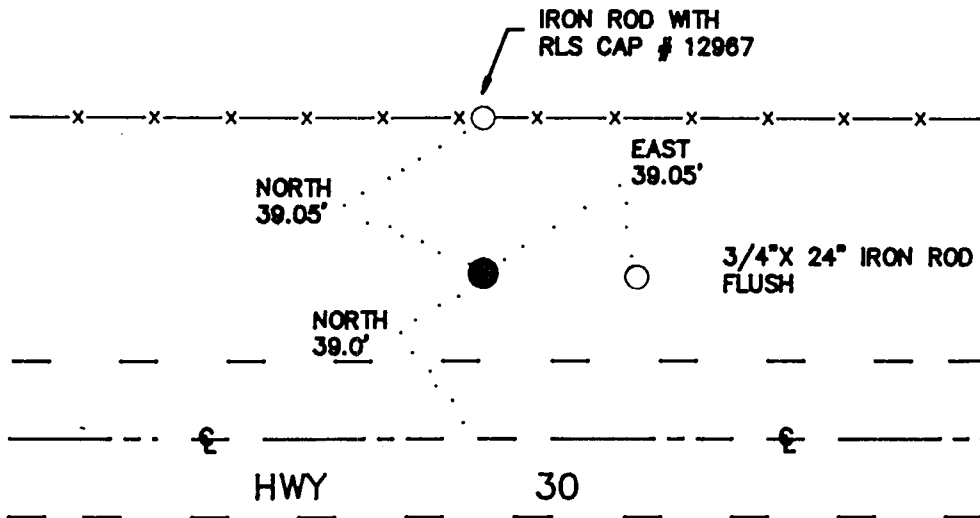
At the corner location shown on the sketch:

On 6/27/89 found a IRON ROD, FLUSH WITH RLS #12967 ON CAP
DATE

left monument as found, lowered monument, removed monument (explain)

On _____ Placed a _____
DATE

SKETCH OF REFERENCE TIES



1983 MURRAY COUNTY
COORDINATE SYSTEM

N=153059.123
E=456022.415

BEARINGS OBSERVED WITH COMPASS

Statement of evidence relative to this corner location is on back of page.

7/12/89
G-1225

I hereby certify that this document and the data contained herein was prepared by me or under my direct supervision.

Lowell R. Pommeroy 7-21-89
SIGNATURE DATE

Registration No. 17005

- Land Surveyor, Professional Engineer
- County Surveyor, County Engineer

OFFICE OF THE COUNTY RECORDER
County of Murray

I hereby certify that this document was filed in the Co. recorders office at 10:00 AM. on the 24th day of July A.D., 1989

County Recorder James V. Johnson
By _____, Deputy

DOCUMENT NO. _____

North Quarter Corner of Section 18, Township 106 North, Range 42 West

The DNR Bureau of Engineering contacted the following offices for survey information:

MN Secretary of State's Office
Murray County Offices of the Recorder and Highway Engineer
Mn/DOT Office in St. Paul
Mn/DOT Office in Willmar
Sioux Engineering, Inc., Office in Windom
Madsen Land Surveying Office in Fairmont
Bell Surveying, Inc., Office in Worthington
Lyle Moseng and Associates Office in Marshall

- 1866 U.S. General Land Office notes obtained from the Secretary of State's Office show the corner marked with a post in mound.
- 1887 Surveyor's Record Book A, on page 39, obtained from the County Recorder's Office contains a survey, surveyor not indicated. Survey shows corner but does not indicate what was found or set. The corner is shown:
1570.14 feet from meander corner number 2
2637.7 feet from the center of Section 7
A description of a monument at the center of Section 7 is not given. A distance from the center of Section 7 to the north quarter corner of Section is also not given.
- No Right-of-Way map for Minnesota Trunk Highway 30 obtained from the Mn/DOT
Date Office in St. Paul shows corner but does not indicate what was found or set. The corner is shown:
2.5 feet south of POT Station 984+98.0
at the intersection of roads east, west and a fence north
2609.3 feet from the northeast corner of Section 18
2639 feet from the northeast corner of Section 13 (note: GLO did not set this corner)
- No A page in a field book that contains information about government corners
Date obtained from the Mn/DOT Office in Willmar contains the same information as shown on the right-of-way map for Minnesota Trunk Highway 30.
- 1981 Field notes, worksheets, and a certificate of survey by Gary D. Martin, RLS #12967, obtained from Madsen Land Surveying show that corner was established as follows:
A) on a line from the northeast corner of Section 18 to the northeast corner of Section 13
B) 2640.00 feet (GLO distance) from the northeast corner of Section 18
A 1/2" rebar with a cap was set to mark corner and the following ties are shown to it:
38.91 feet north of the center line of Highway 30
36.09 feet south of a 1/2" rebar set on the right-of-way of Highway 30
2628.02 feet from the center of Section 7
1564.20 feet (GLO distance) from meander corner number 2
1320.00 feet from the southeast corner W $\frac{1}{2}$ SE $\frac{1}{4}$
- 1982 A certificate of survey by Gary D. Martin, RLS #12967, obtained from Madsen Land Surveying shows that a 1/2" iron reinforcing bar with cap which was previously set was found at corner.
- 1989 The DNR Bureau of Engineering conducted a search for this corner and found a 1/2" iron rod with plastic cap stamped "RLS #12967" flush in ditch bottom. Iron rod measures:
39.0 ft. north of the center line of Highway 30
1319.70 ft. from the southeast corner W $\frac{1}{2}$ SE $\frac{1}{4}$
2627.96 ft. from the center of Section 7

Analysis of the available information led the DNR Bureau of Engineering to conclude that the found iron rod marks the location of the corner.